



## **Wabamun Watershed Management Council 2022-2023 Annual Report**

The Wabamun Watershed Management Council (WWMC) is pleased to provide a snapshot of the WWMC **July 1/2022 - June 30/2023 fiscal year** through presentation of the WWMC 2022-2023 Annual Report. This fiscal year was marked by a significant organization milestone, strengthening stakeholder engagement and participation in field activities to advance lake stewardship.

### **Report Contents:**

- WWMC mission, vision and values statements
- Indigenous Land Acknowledgement
- Board of Directors
- Summary of WWMC activities
- Our partners, corporate members and individual donors
- Communication, Funding and Financial Reports

The WWMC vision, mission and values are as follows:

### **WWMC Vision**

**The Wabamun Lake Watershed is a healthy ecosystem with a community that shares its collective responsibility to be the best stewards of that environment.**

*“Be the best stewards of Wabamun Lake and Watershed”*

*“Keep Wabamun Lake Clean and Clear”*

### **WWMC Mission**

**To guide the development, management, and stewardship of Wabamun Lake through collaborative watershed planning, research, and public education.**

### **WWMC Core Values**

#### **Relationship with the watershed:**

Wherever we live, we live in a watershed. What we do on the watershed lands impacts the health of the lake for today and tomorrow.

**Stakeholder and rightsholder engagement:**

We believe all stakeholders and rightsholders share in the privilege and responsibility of a healthy watershed and should be involved in achieving our mission.

**Knowledge sharing:**

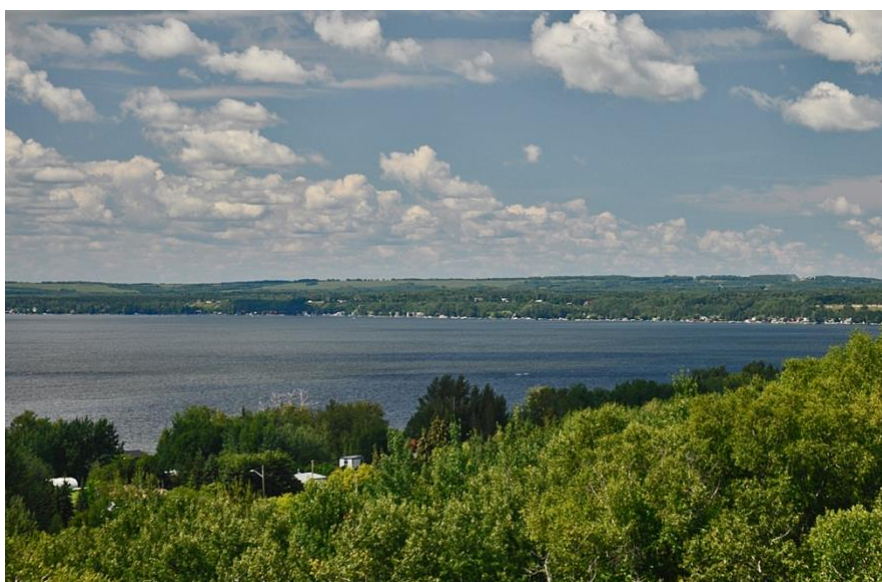
We believe watershed stewardship is achieved and supported by ongoing and deliberate knowledge sharing. It is an activity through which knowledge (information, skills, or expertise) is exchanged among people, communities, or organizations while respecting different ways of knowing, (e.g., science-based knowledge, Indigenous knowledge).

**Collaboration:**

We are most effective working together in the stewardship of the watershed.

**Fairness and integrity:**

WWMC leads watershed stewardship with fairness and integrity.



*Stewardship is a shared responsibility*

**WWMC Land Acknowledgement**

The Wabamun Watershed Management Council (WWMC) respectfully acknowledges that Wabamun Lake and its watershed are situated on Treaty 6 territory, traditional lands of Cree, Saulteaux/Ojibway/Anishinaabe, Blackfoot, Dene, Iroquois, Nakota Sioux, and Métis peoples.

We acknowledge Indigenous peoples' deep connection to the watershed lands of Wabamun Lake, and thank them for their long history and ongoing role in lake watershed management. In an act of reconciliation, as we consider our role as watershed stewards, the WWMC intends to strengthen relationships with local Indigenous peoples so we may journey together to care for Wabamun Lake and its watershed for future generations.

**Our Appreciation**

The WWMC relies on the commitment, cooperation, and contributions of all stakeholders to protect the health of Wabamun Lake and its watershed. The WWMC is grateful to all our collaborative partners, corporate sponsors and individual donors for your support of WWMC.

**Partners**

Alberta Government  
 Alberta Lake Management Society  
 North Saskatchewan Watershed Alliance  
 Parkland County  
 Summer Village of Pt. Alison  
 Land Stewardship Centre  
 Alberta Conservation Association  
 Seba Beach Seniors Club

**Gold Corporate Members**

TransAlta  
 Summer Village of Seba Beach  
 Degner Construction  
 Ultra Seat Corporation  
 Wabamun Home Hardware

**Silver Corporate Members**

MacTaggart Veterinary Clinic  
 Sunshine Bay Yacht Club  
 Wabamun Sailing Club

Stony Plain Fish & Game Association  
 Drayden Insurance Ltd.

**Bronze Corporate Members**

Shoreside Inn & Suites  
 Derby's Lakeview General Store  
 Pineridge Golf Resort  
 Edmonton Yacht Club  
 Seba Beach Heritage Society  
 Wabamun ATB Financial  
 Wabamun Hotel

**Individual Donors**

Kelly & Mary Aldridge, Margaret Bakker, Todd Baldwin, Lyn ter Borg, Conrad Clement, Rob Cowley, Sandy Drummond, Carol & Keith Epton, Susan Evans, Neil Fleming, Colleen & David Judge, Kobylko Family, Maurice Lemieux, Kathy MacDonald, Averie & Carman McNary, Don and Betty Meredith, Peter and Jordyce van Muyden, Julia & Tony Nelson, Barb Parker, Cliff Richard, Robarts Family, Bill & Kate Russell, Ian Simpson, Denny Thomas, Denise & Bernie Wade, Sheila Wynn, Dwayne Zon. Edmonton Community Foundation: *Stan & Janet Franklin Fund, Mclvor Kent Endowment Fund.*

**WWMC Board of Directors and Representatives**

The 2022-2023 WWMC Board of Directors and Representatives represent a range of stakeholder sectors in the Wabamun watershed including watershed residents, businesses, NGOs (e.g., conservation groups, sailing clubs), provincial and municipal governments, and Indigenous communities. The commitment, expertise and efforts of each Board member and Representative is greatly appreciated. These are the dedicated people who direct lake stewardship work at Wabamun Lake!

Sue Styles – Chair  
 Neil Fleming – Past Chair  
 Stan Franklin – Secretary  
 Dave Ball – Treasurer  
 Don Meredith – Communications  
 Michelle Foster  
 Randy Heil  
 Denny Thomas  
 Doug Thomas

Arin McFarlane-Dyer – Alberta Environment and Protected Areas  
 Megan Thompson – Lac Ste. Anne Métis Community Association  
 Rob Wiedeman – Parkland County Councillor (Division 5)

**WWMC Activities**

All activities at the WWMC arise from two guiding frameworks, namely the 4 main goals of the [Wabamun Watershed Management Plan \(2020\)](#) and the 4 key strategies of the [2022-2025 WWMC Strategic Plan](#).

**4 Main Goals of the Wabamun Watershed Management Plan (2020):**

- Good Water Quality
- Healthy Aquatic Ecosystems and Biodiversity
- Wise Land Use
- Engaged Stewardship

#### 4 Key Strategies of the 2022-2025 WWMC Strategic Plan:

Strategy 1. Maintain a functional sustainable organization

Strategy 2. Collaboration and Advocacy

Strategy 3. Maintain, improve and monitor the health of Wabamun Lake and watershed

Strategy 4. Maintain communication role and provision of information regarding watershed health

## Summary of WWMC Activities

### WWMC became a Canada Revenue Agency (CRA) Registered Charity

The WWMC reached an organizational milestone on October 21, 2022 when it became a CRA registered charity. Donations to the WWMC may be made at [wwwmc.ca](http://wwwmc.ca). Thank you to all who have made a donation to the WWMC in the 2022-2023 fiscal year.

### WWMC implements a New Membership Program

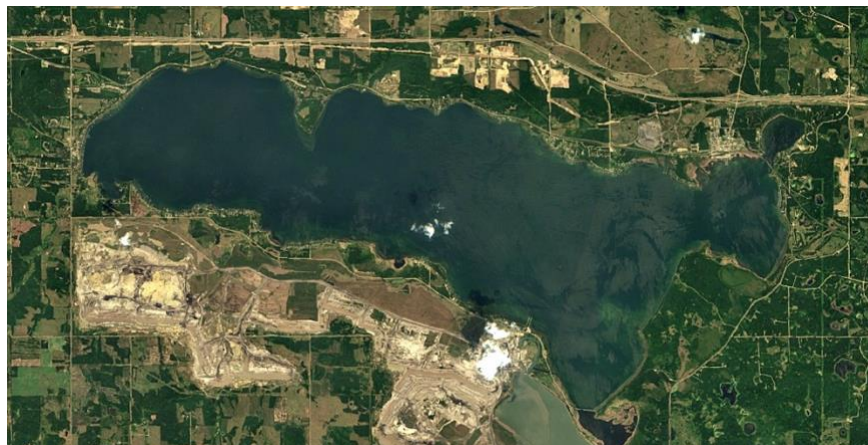
The WWMC transitioned to an annual membership program to align with the requirements of the Alberta Society's Act. General Membership is free and both initial membership and annual renewal membership is easily navigated and processed. For initial general membership and renewal go to [wwwmc.ca](http://wwwmc.ca)>Get Involved

### Water Sampling

The WWMC participated in the [Alberta Lake Management Society \(ALMS\)](#) lake water sampling program again in both summer season ([LakeWatch](#)) and winter season ([LakeKeepers](#)). We logged a total of 8 sampling days (4 days in each season). Wabamun Lake was one of near 100 Alberta lakes sampled. Physical, biological and chemical data are obtained to discern seasonal and long-term trends arising from the independent and cumulative impact of land development, recreation, nutrient loading, pollution, climate change, etc. in our watershed. This activity is an excellent opportunity to engage with other stakeholders/rightsholders and exchange knowledge and perspectives about the lake; municipal leaders (Summer Villages, Parkland County), funding organization (Land Stewardship Centre Outreach Coordinator) and news media (CBC) have accompanied us on water sampling events. The 2022-2023 LakeWatch and LakeKeepers reports are found on our [Studies & Reports website page](#).

### Satellite-Derived Algal Monitoring

Tracking and Forecasting of Cyanobacterial Harmful Algal Blooms in Alberta Using Remote-Sensing Techniques Under a Changing Climate



Satellite photo of Wabamun Lake, taken on June 28, 2023, showing algal blooms. Photo courtesy of ALMS

The WWMC is a participant in this research project. The project is a collaboration with University of Alberta (Vinebrooke Lab), ALMS, Alberta Environmental and Protected Areas, Alberta Biological Monitoring Institute, Alberta Health, and several partners such as Pigeon Lake Watershed Association, Lac La Biche County, Associated Environmental, and WWMC. This research project is funded by Alberta Innovates. The WWMC participated in the data collection component of this project through obtaining water samples. On 3 cloudless summer days, coinciding with ideally the Sentinel 2 satellite, water samples were taken from 30 locations on Wabamun Lake.

The water samples are analyzed for chlorophyll-a associated with cyanobacteria. Chlorophyll-a concentration in the water samples from the different lake locations is compared with satellite imagery of the lake color in that area, with an aim to advance predictive modelling of algal blooms. The WWMC data collection commitment for this project spans 2 years.

### **Bulrush Restoration on Wabamun Lake**

The WWMC began planning for a Bulrush Restoration on Wabamun Lake Pilot project to take place in summer of 2023. The project is aimed at restoring shoreline protection and fish and wildlife habitat. The project will have two main components—Planting of hardstem bulrush in 4 different locations in Wabamun Lake and a riparian enhancement education workshop with demonstration of willow-staking. Regulatory approvals and funding for this project have been secured. We gratefully acknowledge that funding for this project has been generously provided by the Alberta Conservation Association (Conservation, Community and Education Grant), Land Stewardship Centre (Watershed Stewardship Grant) and the Summer Village of Point Alison. As this interesting project unfolds, there will be more to share in next year’s annual report.

### **Stakeholder Engagement – WWMC Outreach**

As iterated earlier in the WWMC core values—at the WWMC, we believe all stakeholders and rightsholders share in the privilege and responsibility of a healthy watershed and should be involved in achieving our mission. As is usual, the WWMC participated in several opportunities to engage with stakeholders to exchange perspectives and to provide lake stewardship information. Some examples of WWMC stakeholder engagement and outreach are as follows:

- WWMC education booth at several events/locations
  - Aquatic Invasive Species (AIS) Inspection and education event at Wabamun Hamlet Boat Launch with WWMC collaborative partners (Alberta Environment and Protected Areas, North Saskatchewan Watershed Alliance, Parkland County)
  - Alberta Conservation Association Kids Can Catch Day / Winter Lake Clean-up Day
  - Seba Beach Farmer’s Market
  - Wabamun Lake Provincial Park
- WWMC presentations
  - ALMS 2022 conference - ‘Wabamun Watershed Management Plan – a Story of Collaboration’
  - Seba Seniors Talking Circles series - ‘Honoring Water: Circling Back’
  - Mr. Pon’s Grade 7 students at Wabamun School—‘Introduction to the Wabamun Lake Watershed and Role of the WWMC’ (content aligns with science curriculum).
- Engagement with municipalities, industry, lake stewards– examples
  - Provided feedback to Parkland County at public forum on Wabamun Area Vision
  - Supported presentation by Wabamun Watershed Management Plan Implementation Steering Committee to Parkland County Council to advance Parkland County Council acceptance of the 2020 [Wabamun Lake Watershed Management Plan](#) (WLWMP).



Parkland County Council unanimously approved 3 motions as a measure of acceptance of the WLWMP. Note: on record Summer Villages of Seba Beach, Betula, Kapasiwin and Lakeview have also accepted the WLWMP on various terms.

- Elevated promotion of good road salt management practices in Parkland County – road salt management resources posted on [WWMC.ca](http://WWMC.ca)
- Ongoing engagement with TransAlta on Highvale Mine Reclamation application, fly ash project and solar project.
- Engagement with Enbridge Inc. to gain information related to Open Access Wabamun Carbon Hub and impact on Wabamun watershed
- Participation in Parkland Regional Lakes group events – this group works to connect lake stewards in Parkland ecoregion to share knowledge/challenges/solutions. Attendees include, but are not limited to, Lake Isle and Lac St. Anne (LILSA), Mayatan Lake Management Association (MLMA), Jackfish Lake, Hubbles Lake, Wizard Lake, other property owners of the lakes of the Carvel Pitted Delta.
- Ongoing engagement with collaborative partners on the Wabamun Watershed Management Plan Implementation Steering Committee (WWMP ISC) - The committee is composed of representatives from North Saskatchewan Watershed Alliance, Alberta Environment and Protected Areas, Parkland County, all 5 Wabamun Lake Summer Villages, Alberta Lake Management Society, TransAlta and the WWMC. The WWMP ISC also welcomes membership/Input from Indigenous government/communities, Alberta Health, Dept of Oceans and Fisheries and other relevant stakeholders/agencies. In the 2022-2023 fiscal year the WWMP ISC elevated focus on advancing the technical aspects of WWMP specifically as related to lake/watershed surface water quality goals .

The above summary of WWMC activities does not include the critical work and report of the WWMC communications team. The WWMC Communications is led by WWMC Communications Chair Don Meredith and Neil Fleming. The WWMC gratefully appreciates the commitment and excellent work of both Don and Neil ...many thanks fellows!

The 2023 Annual Communications Report is found in Appendix 1.

As part of the 2023 Annual Report, the WWMC Fundraising and Financial Reports are presented in Appendix 2 and 3, respectively.

In looking forward to the next fiscal year, the WWMC plans continued implementation of the Watershed Management Plan in collaboration with the Wabamun Watershed Management Plan Implementation Steering Committee, further strengthening of stakeholder engagement with WWMC communications and community presence, and focused effort on maintaining a sustainable organization.

## Appendix 1

**WWMC Annual Communications Report**

October 1, 2022 to September 30, 2023

Don Meredith – WWMC Communications Chair

As before, the four major avenues the WWMC uses to communicate with the public in the last 12 months have been our Website, Facebook Page, Newsletters and MailChimp email messages. As well, various members participated in outreach activities at various events around the lake, engaging many people on a face-to-face basis—always the best communication.

**Website**

As the attached Annual Website Report illustrates, many people come to [our website](#) for information about the lake. The Wabamun Fishery and Lake Water Level pages still hold top spots for pages most visited, reflecting stakeholder concerns in those areas.

**Facebook**

Our [Facebook group](#) is a key conduit to get information into stakeholders' hands. As of this writing, there are 801 members of the group. Thanks to Neil Fleming for his work moderating and providing content.

**Newsletters**

We published four quarterly [newsletters](#) over the last year. Each was chock-full of valuable information for the concerned lake stakeholder. Sue Styles, Neil Fleming, Stan Franklin and other board members provided the content.

**MailChimp**

From October 1, 2022 to September 30, 2023, the WWMC sent out 15 messages to its members. Starting in July of 2023, the messages were only sent to members who had applied for annual memberships, expiring in June 2024. As a result, MailChimp reported the message opening rate had increased (75-90%).

...Website Annual Report follows

# Website Annual Report

## Wabamun Watershed Management Council

October 2023 AGM  
Don Meredith  
Communications Chair

### Website Stats

(Squarespace Statistics)  
October 1, 2022 to September 30, 2023

- 5,251 unique visitors in 7,087 visits
- 11,939 total page views
- **Top Ten Pages** visited
  1. Home—2,281 visits
  2. Wabamun Fishery—2,239
  3. Lake Water Level—1,588
  4. What's New—624
  5. Blue-green Algae (Cyanobacteria)—364
  6. FAQ—343
  7. Studies & Reports—334
  8. Newsletters—317
  9. General Membership—314
  10. Get Involved—300

### Other Trivia

- **Top Traffic Sources**
  1. Search—4,160 visits
    - Google—3,922
    - Bing—144
    - Yahoo—51
    - DuckDuckGo—40
    - Ecosia—3
  2. Direct—2,556
  3. Social Media—268
    - Facebook—253
    - Twitter—12
    - Instagram—2
  4. Referrals—91
  5. Email—12
- **Top Operating Systems**
  1. iOS—2,753 visits
  2. Windows—1,678
  3. MacOS—1,347
  4. Android—1,095
  5. Others—214
- **Devices**
  6. Mobile—3,713 visits
  7. Desk/Laptop—3,232
  8. Tablet—142
- **Top Browsers**
  1. Chrome—1,991
  2. Mobile Safari—1,855
  3. Chrome Mobile —1,132
  4. Safari—787
  5. Others—1,322



## Appendix 2

**WWMC 2022-2023 Fundraising Report****Fundraising Committee:**

Sue Styles, Neil Fleming, Michelle Foster, Denny Thomas

**2022-2023**

Corporate Membership –	\$2850
Individual Donation	- \$3284
SV Point Allison	- <u>\$15,000</u>
TOTAL	- \$21,134

The WWMC is a CRA registered charity (effective October 21/2022).

**Thank you for your generous funding support of WWMC!**

## Appendix 3

**WWMC Financial Report**  
Dave Ball – WWMC Treasurer

**Wabamun Watershed Management Council****Financial Statements**

Cash Basis, except for restricted contributions that are included in revenue only as eligible expenses are incurred.

**Statement of Operations**

Year Ended June 30

**Revenues**

	<b>2023</b>	<b>2022</b>
Donations	<b>\$3,284</b>	\$2,592
Corporate Sponsorships	<b>\$2,850</b>	\$3,500
Restricted Contributions	<b>\$0</b>	\$3,950
	<b>\$6,134</b>	\$10,042

**Expenses**

Outreach to Residents	<b>\$764</b>	\$5,321
Financial Service Charges	<b>\$179</b>	\$62
Administration	<b>\$1,203</b>	\$912
Conferences and Workshops	<b>\$210</b>	\$0
Sponsorships	<b>\$828</b>	\$0
Insurance	<b>\$1,498</b>	\$1,723
	<b>\$4,682</b>	\$8,018

**Excess of Revenues over Expenses**

	<b>\$1,452</b>	\$2,025
--	----------------	---------

**Statement of Changes in Net Assets**

Year Ended June 30

**Net Assets - Beginning of Year**

	<b>2023</b>	<b>2022</b>
	<b>\$8,947</b>	\$6,922

## Excess of Revenues over Expenses

	<b>\$1,452</b>	\$2,025
--	----------------	---------

**Net Assets - End of Year**

	<b>\$10,399</b>	\$8,947
--	-----------------	---------

## Statement of Financial Position

As at June 30

	2023	2022
<b>Assets</b>		
Cash	\$29,399	\$8,947
<b>Total Assets</b>	<u>\$29,399</u>	<u>\$8,947</u>
<b>Liabilities and Net Assets</b>		
<b>Liabilities</b>		
Deferred Revenue (restricted contributions)	<u>\$19,000</u>	<u>\$0</u>
<b>Net Assets</b>		
Unrestricted	<u>\$10,399</u>	<u>\$8,947</u>
<b>Total Liabilities &amp; Net Assets</b>	<u>\$29,399</u>	<u>\$8,947</u>